

BRIDJIT Curb Ramp

Galvanized Washer Method



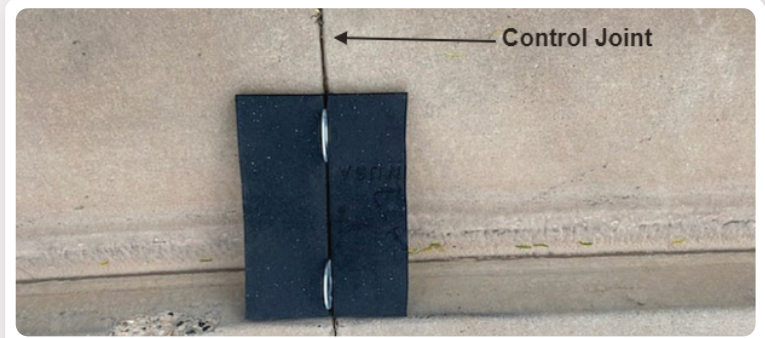
BEFORE YOU BEGIN

If you enter and exit your driveway with both wheels on the ramp, BRIDJIT Curb Ramps stay in place quite well. However, some customers prefer using this anchoring method. This method only works if you have a concrete control joint in the right place with enough opening in the joint for the washers to be inserted. Please read all instructions below before ordering washers and proceeding with this option.

STEP 01

LOCATE A CONTROL JOINT

Find the control joint/expansion joint in the curbing that will work best as your stationary point. Make sure there is enough space in the concrete joint for a large washer to be driven into the opening.



ALIGN THE RAMP SET WITH THE JOINT

Move the ramp to align one of its bolted connections to match the control joint, then insert a 3 ½-inch outside-diameter galvanized washer* down through the rubber connection and into the concrete joint. Pound the washer into the joint until the top of the washer is flush with the top of the ramp, like this.

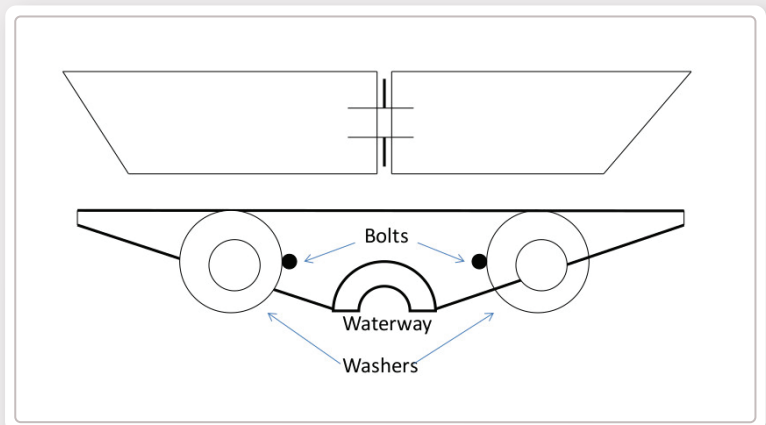
STEP 02



STEP 03

COMPLETE THE ANCHOR

Insert the second washer as illustrated, pushing it down through the rubber joint and into the concrete joint. Pound the washer as before. This creates a shear point that keeps the entire ramp in place yet allows you to pull the top of the ramp out into the street for cleaning. If you have all the right components, this method will help keep your ramps from moving.



Notes: * This 3 ½ in outside-diameter galvanized washer cannot be found at your local hardware store. Instead, we recommend purchasing online. We have found this [company](#) to be helpful. Or feel free to Google "fasteners" to find other vendors.

If your expansion/control joint is wide, it may require 2 side-by-side washers for this method to work.